

Using Big Data In Evaluations What exists and how useful is it?

Jerusha Govender

Managing Director – Data Innovator

27 June 2018

DPME – National Evaluation Seminar



planning, monitoring
& evaluation

Department:
Planning, Monitoring and Evaluation
REPUBLIC OF SOUTH AFRICA

DATA INNOVATOR



We help organizations tell their story through innovative analysis, data visualization & strategic communication

**Founded in
2015**

BEE Level 1

**Led by team
of young,
African
women**

**Socially-
conscious
model**



01

M&E TECHNICAL ASSISTANCE

- M&E System Set-up
- Data process mapping
- Reporting application development
- Coaching and advisory support

02

EVALUATION

- Mobile applications and other technology-based interventions
- Special interest projects in Entrepreneurship and Early Childhood Development



03

DATA ANALYTICS & COMMUNICATION

- Infographics
- Data analytics and visualization
- Dashboard development



04

TRAINING

- M&E System Set-up
- Vizual Story-telling

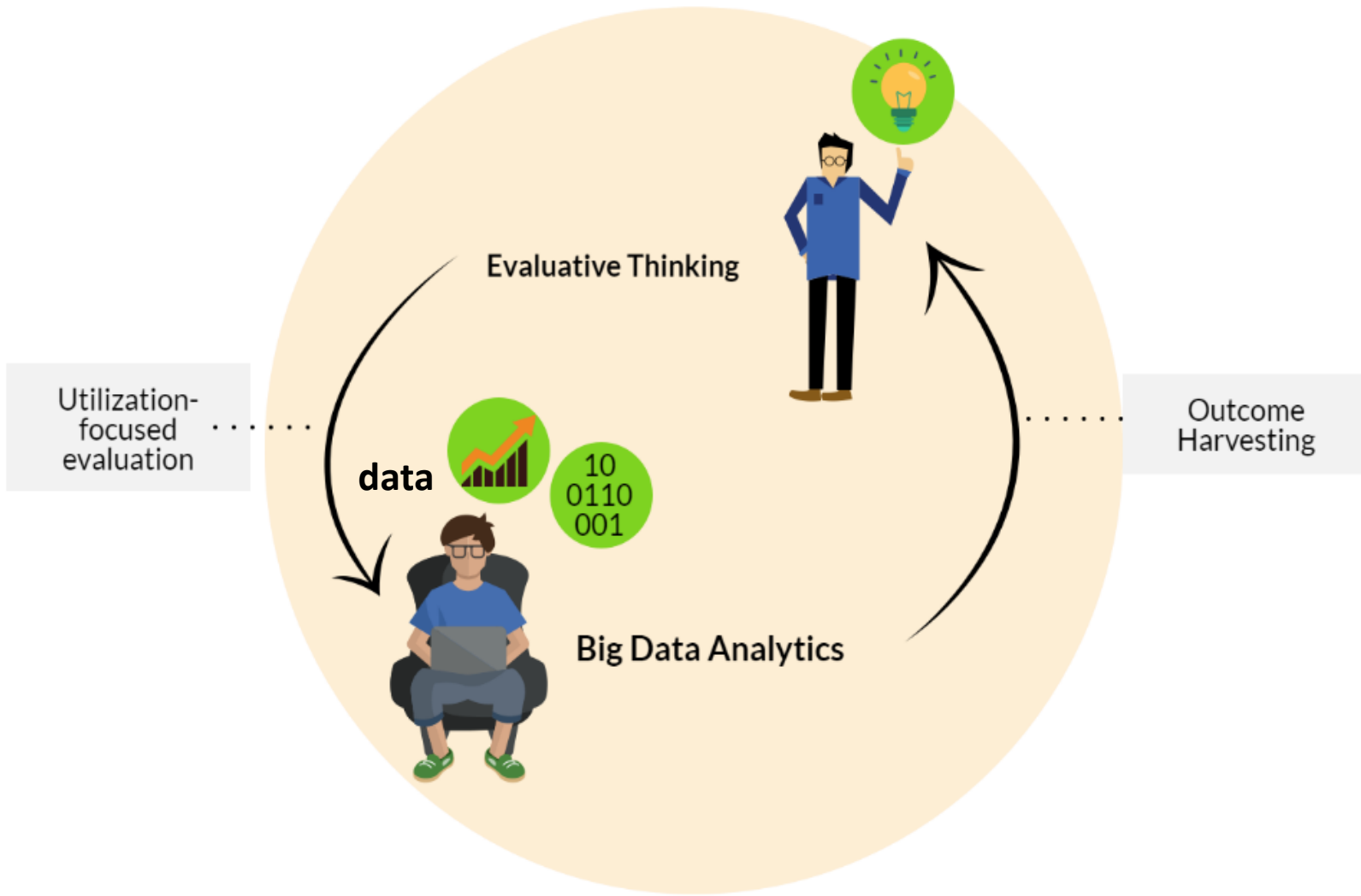


What exists and how useful is it?

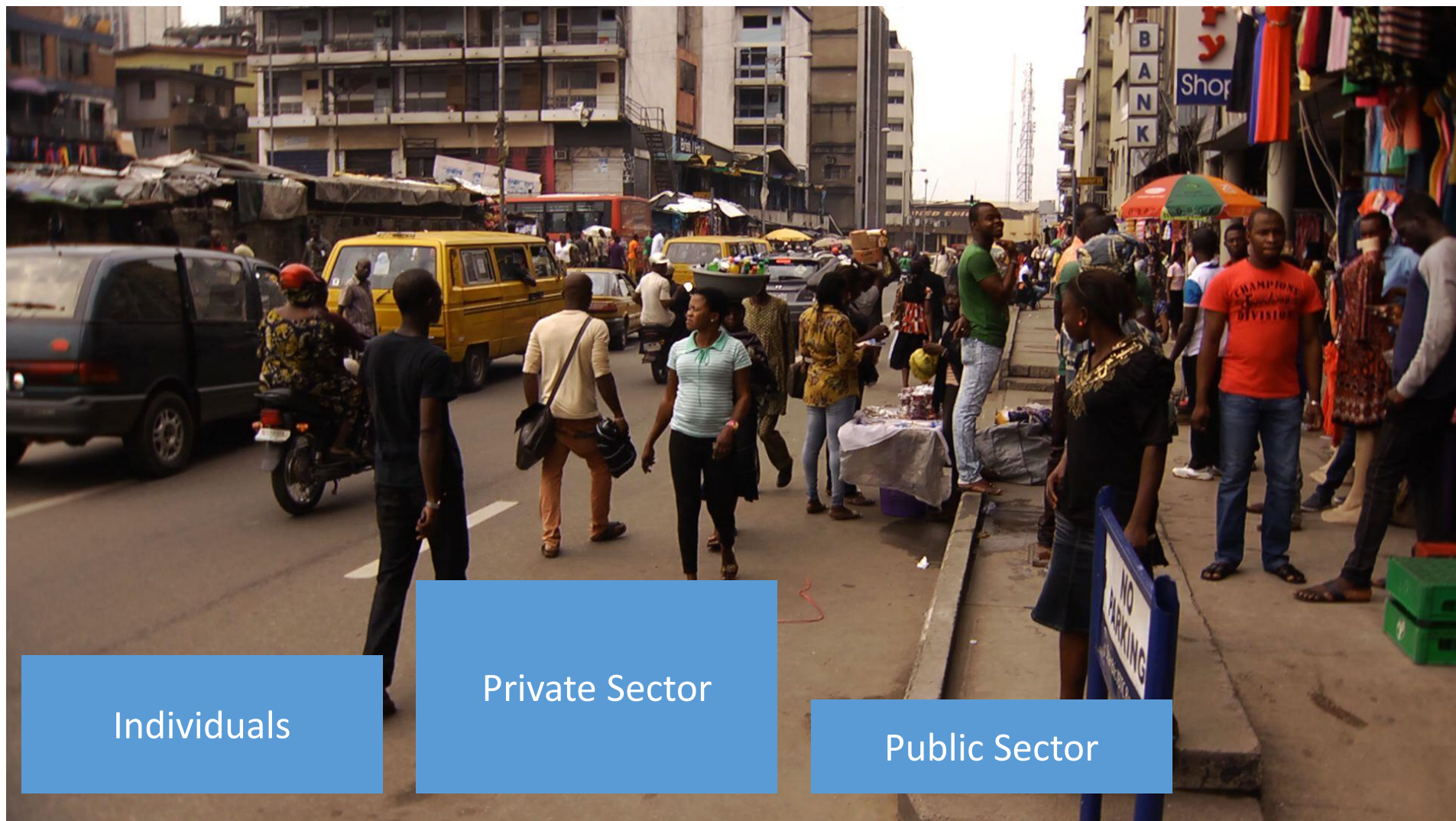


What exists and how useful is it?





Big Data Ecosystem

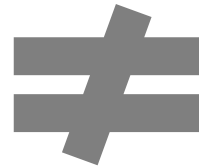


Individuals

Private Sector

Public Sector

**Open
Data**



**Big
Data**

TABLE 5–1 POTENTIAL WAYS THAT BIG DATA AND ICTS CAN STRENGTHEN PROGRAMME EVALUATION

EVALUATION ACTIVITIES AT EACH STAGE OF THE PROGRAMME	BIG DATA	ICT
1. Project identification and appraisal		
Initial diagnostic studies and defining affected populations	<ul style="list-style-type: none"> a. Analysis of Remote sensing b. Analysis of social media data and internet queries to identify potential issues and problems 	<ul style="list-style-type: none"> a. Doing mobile phone surveys
2. Project planning and design		
Developing a theoretical framework	<ul style="list-style-type: none"> a. Theory of Change from passive observations 	<ul style="list-style-type: none"> a. Theory of Change from active data collection
Selecting the evaluation design	<ul style="list-style-type: none"> a. Identifying potential big data contributions to each design option 	<ul style="list-style-type: none"> a. Using ICTs (e.g. excel files, PDF documents) to incorporate

UN Global Pulse, 'Integrating Big Data into the Monitoring and Evaluation of Development Programmes,' 2016

Categories

1. Data Exhaust



evaluation
evaluation
evaluation definition
evaluation meaning
evaluation report

2. Online Information



28 day summary with change over previous period

Tweet impressions
759 ↓ **83.5%**

Profile visits
65 ↓ **58.1%**



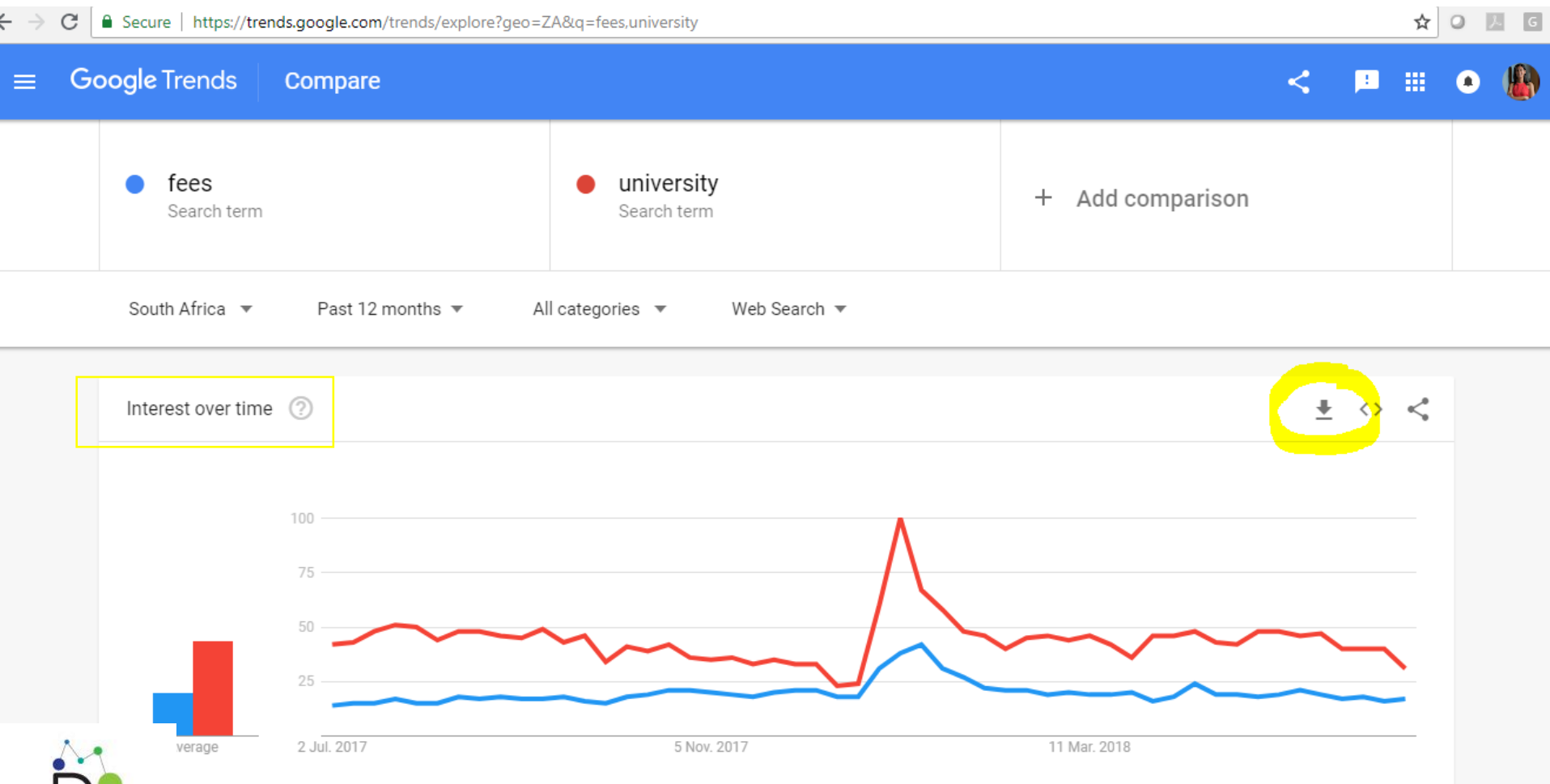
3. Physical Sensors



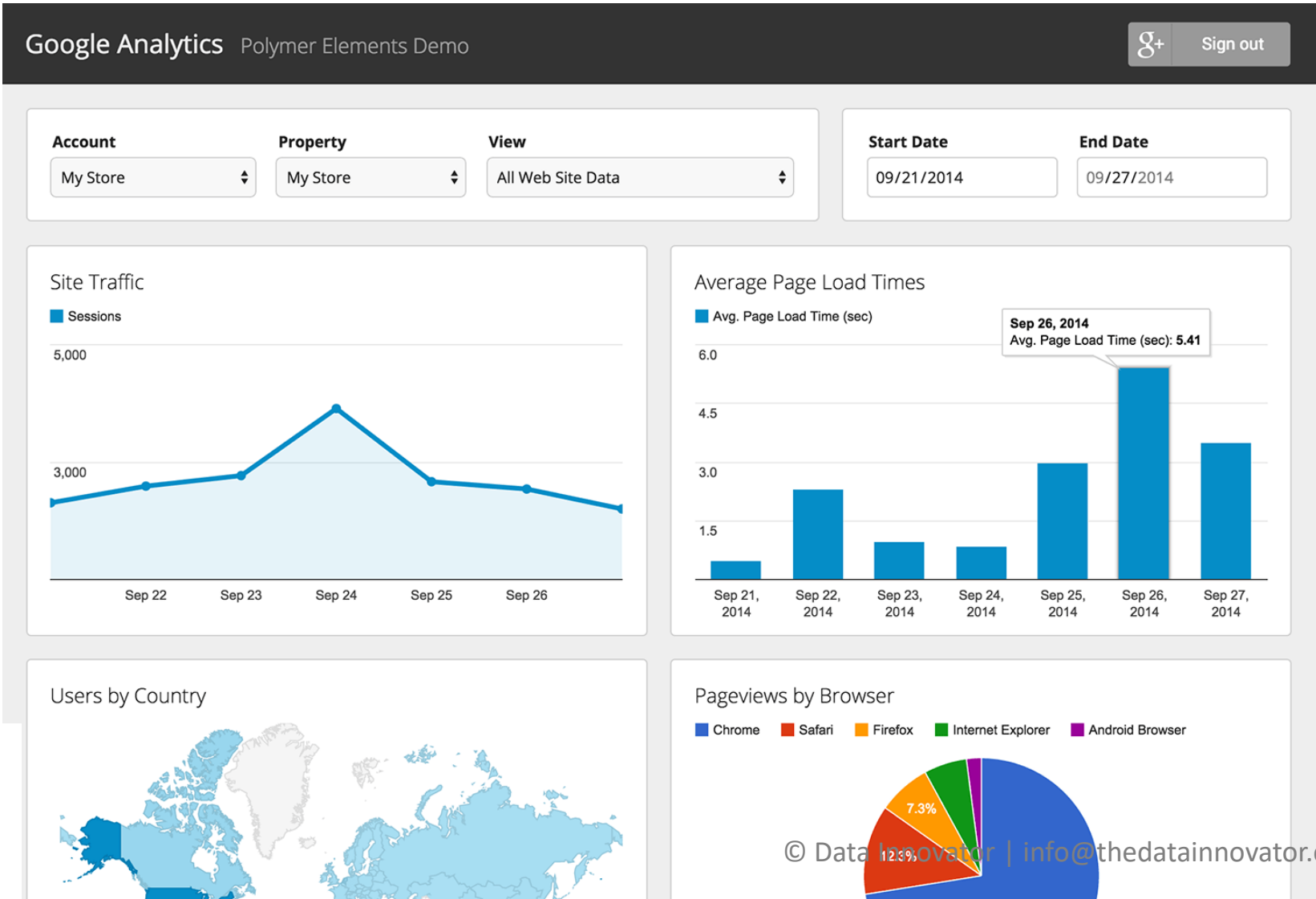
4. Citizen Reporting or Crowd-sourced Data



1. Data Exhaust



1. Data Exhaust



2. Online Information



Secure | <https://analytics.twitter.com/user/DataInnovator/tweets>

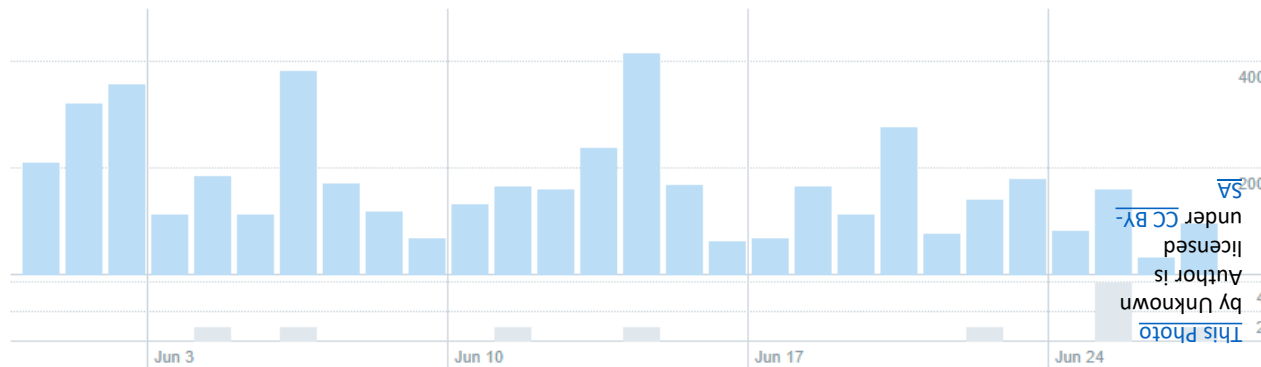
Analytics Home Tweets Audiences Events More

Data Innovator Sign up for Twitter Ads

Tweet activity

Last 28 Days Export data

Your Tweets earned 5.1K impressions over this 28 day period



YOUR TWEETS
During this 28 day period, you earned 172 impressions per day.



Tweets Top Tweets Tweets and replies Promoted Impressions Engagements Engagement rate

Engagements Showing 28 days with daily frequency

Engagement rate 1.7% Jun 27 4.2% engagement rate



Data Innovator @DataInnovator · 4h
#QuickQuestion Do you think you or your team have adequate data skills to use in making evidence-based decisions in your organisation? @DataInnovator @JNSOOMAR @Africa_evidence @SAMEA_ZA @EvaluationSA

82 9 11.0%

2. Online Information

Save Sample & Continue

Advanced Options

POSTS

INFLUENCERS

MEDIA

Hastag analytics

93
POSTS

77
USERS

1,709
ENGAGEMENT

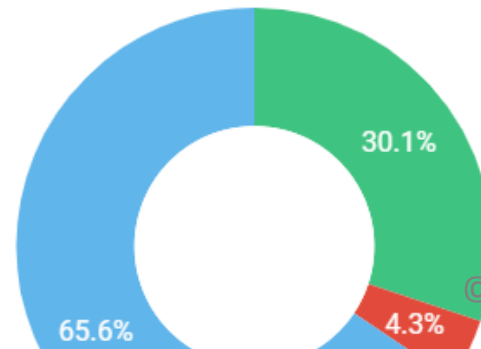
515,725
REACH

683,999
IMPRESSIONS

Timeline

PREDICT

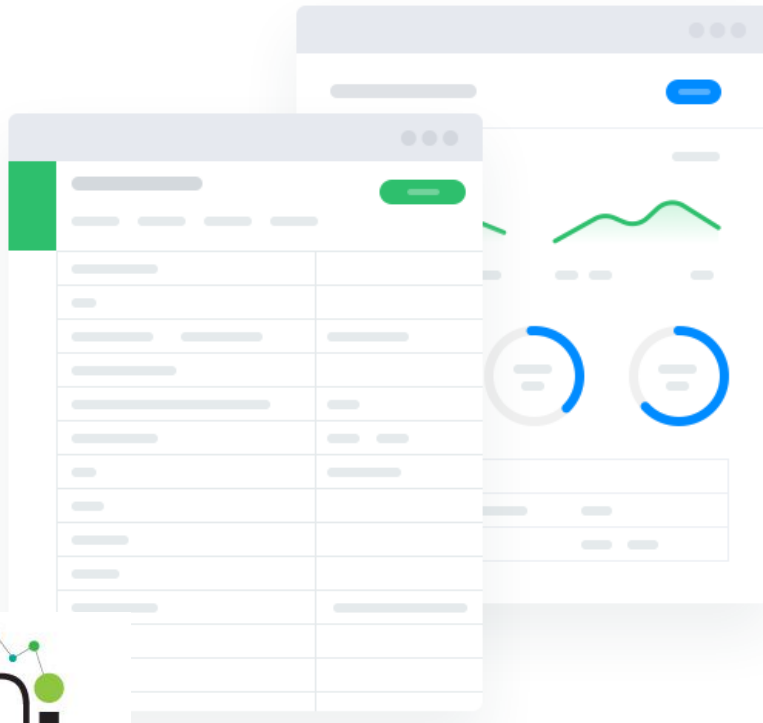
Sentiment



Positive
Negative
Neutral



2. Online Information



Analyze Text Data

Define your custom categories and tags to structure your text data. Process thousands of texts and get actionable insights.

- ✓ From topic classification to sentiment analysis and entity extraction.
- ✓ Get insights from open ended feedback in surveys, reviews, social media and NPS.
- ✓ Process text data in Google Sheets, CSV or Excel.



2. Online Information

Open Data

Not secure | dataportal.opendataforafrica.org/enogdcf/african-regional-energy-statistics-2014?regionId=ZA



AFRICAN DEVELOPMENT BANK GROUP

AFRICA
INFORMATION
HIGHWAY

EN FR

Home Data Catalog Gallery MSCD Publications

Login Sign Up

African Regional Energy Statistics, 2014

Crude Oil, Electricity, Energy, Petroleum

Verified 141 views 0 stars 1 embeds

Final Consumption of coking coal, 1000 tonnes

Region 2

Indicator 1

Type to filter

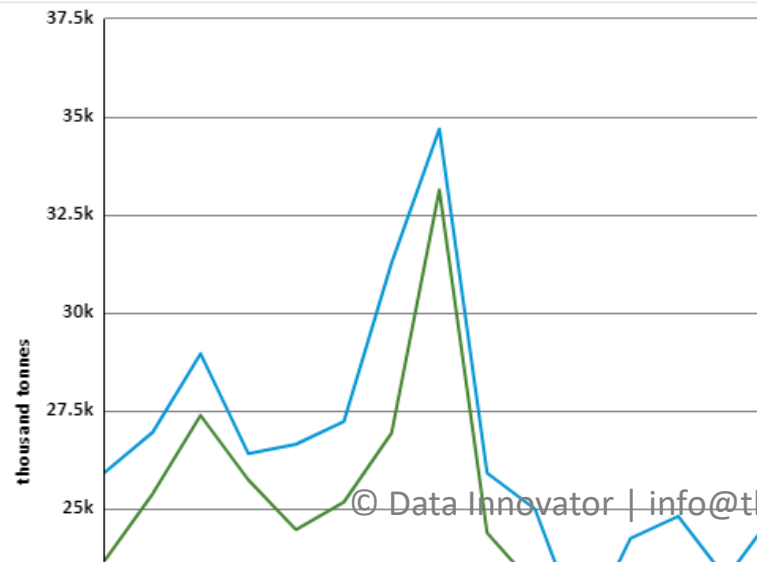
Coking coal

- Final Consumption of coking coal, 1000 tonnes
- Consumption of coking coal in industry, 1000 tonnes
- Net imports of coking coal, 1000 tonnes
- Production of Coal (1000 tonnes)

Biomass

- Production of charcoal, 1000 tonnes
- Final consumption of Charcoal (1000 tonnes)
- Production of Firewood (1000 tonnes)

Crude Oil



© Data Innovator | info@thedatainnovator.com



3. Physical Sensors

Proxies/Direct

Secure | <https://earthobservatory.nasa.gov/GlobalMaps/?eocn=topnav&eoci=globalmaps>



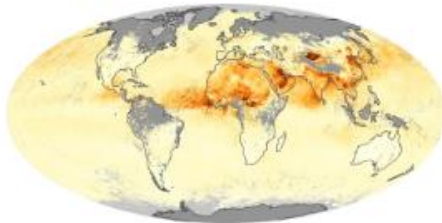
[Home](#) [Images](#) [Global Maps](#) [Features](#) [News & Notes](#)

[Home](#) / [Global Maps](#)

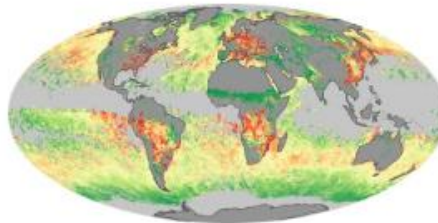
Global Maps

NASA satellites give us a global view of what's happening on our planet. To explore how key parts of Earth's climate system change from month to month, click on one of the maps below.

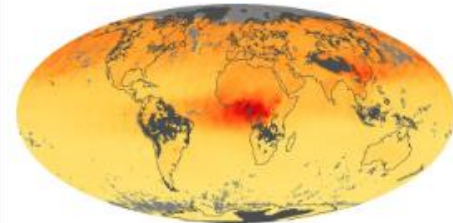
Aerosol Optical Depth



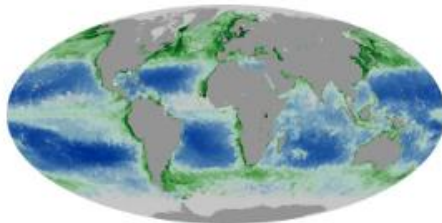
Aerosol Size



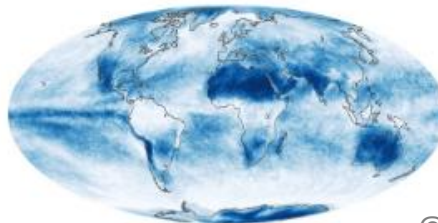
Carbon Monoxide



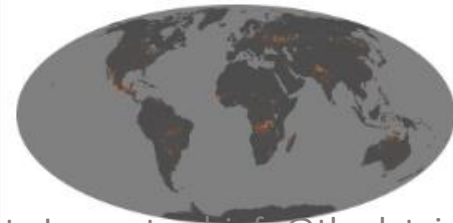
Chlorophyll



Cloud Fraction



Fire



3. Physical Sensors

OSCAR BARUFFA

Data, Sustainability, Technology

MENU

Home

About

Side Projects & Experiments

CATEGORIES

Blockchain

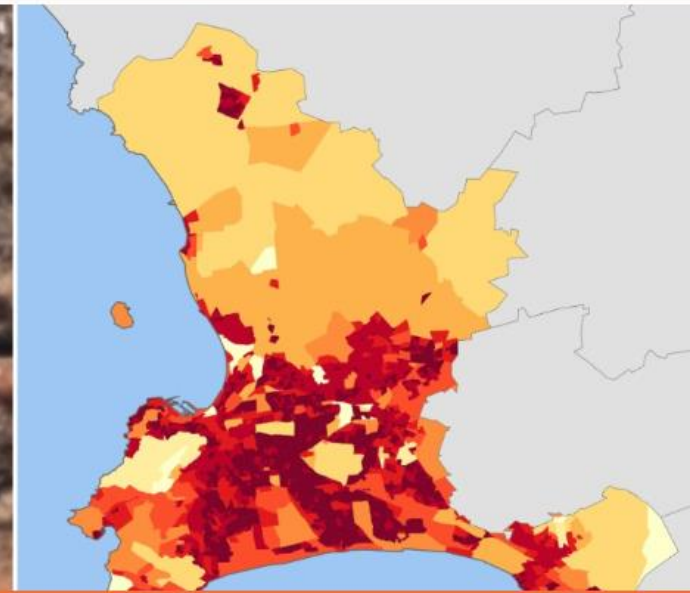
Data

Recycling

Reporting



🏠 > Data > WasteTech: Curbing illegal dumping by predicting where it might happen



WasteTech: Curbing illegal dumping by predicting where it might happen

👤 OSCAR 📅 18TH APRIL 2017 📁 DATA / WASTETECH

3. Physical Sensors



Take me to the data Help



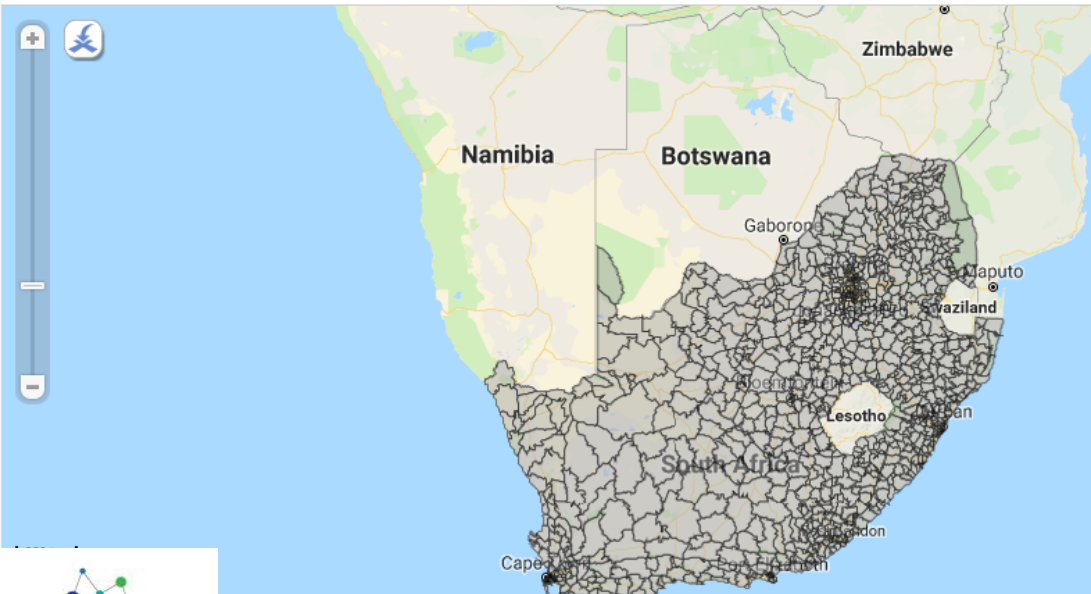
Sign In

Police Station Boundaries

Based on [Police Station Boundaries](#)

This shapefile provides boundaries for all police station. This data can be used in conjunction with police statistics to be able to plot crimes geographically.

More Views Visualize **Export** Discuss Embed About



Secure | <https://data.code4sa.org/Government/Police-Statistics-2005-2017/8d9f-f69c>

Police Statistics | 2005 - 2017

Police statistics per police station for 29 different crime categories. Includes data from 2005 - 2017. This dataset is based on the data released by SAPS but formatted in a way that allows for proper interrogation of the data. The native format makes it impossible to aggregate the data.

About this Dataset

Updated **May 9, 2018**

Data Last Updated May 6, 2018 Metadata Last Updated May 9, 2018

Date Created September 22, 2014

Views **7,509** Downloads **1,150**

Topics

Category	Government
Tags	police, crime

Licensing and Attribution

License	Public Domain
Source Link	http://www.saps.gov.za/resource_centre/publications

© Data Innovator | info@thedatainnovator.com



Data Provided by South African Police Service Dataset Owner Adi Eyal

3. Physical Sensors

Secure | <https://www.afrigis.co.za/createamap/afrigis-data/>



A F R I G I S

SOLUTIONS

I WANT TO

DEVELOPERS

MAPPED INSIGHTS

CONTACT



AFRIGIS DATASETS

Your business is only as good as the quality of data that can be leveraged.

You can only get better results if you know exactly WHERE your customers are.

Accurate, geomapped addresses provide better data quality and results.

- Provinces, Municipalities, District Councils, Magisterial Districts, Electoral Wards, Tribal Authorities
- AfriGIS National Address Database (NAD)
- Value Added Deeds Data
- AfriGIS Street Centrelines
- AfriGIS Points of Interest
- AfriGIS Suburb Boundaries
- AfriGIS Town Boundaries
- AfriGIS Postal Codes
- AfriGIS Postal Code Regions
- AfriGIS Proclaimed Town Boundaries
- AfriGIS Built Up Coverage
- AfriGIS Gated Communities
- AfriGIS BizCounts
- AfriGIS Route Optimisation Database
- AfriGIS Telecoms Movements and Insights Database
- AfriGIS Africa Data
- AfriGIS Risk Data (Weather, Soil, Accessibility)
- AfriGIS Sectional Schemes
- And more...



4. Citizen Reporting/Crowd-sourcing



Online Polls



Hotlines – e.g. **National
Commuter Hotline**

4. Citizen Reporting/Crowd-sourcing

Secure | https://data.code4sa.org/d/i2ec-4rms/visualization

Untitled Visualization - Based on Protes... + Add Visualization Save

Government
Less Info ^

A mashup of **ISS's Protest Data** with Wazimap's Census Data

Updated
Unsaved
View Count
0

Based on *Protest Data with Census Data*

Add Filter

ISSID	Municipality_metro	Metro	Rural	TownCity_Name	Suburbareaplacename	Police_Station
105	Western Cape - City of Cape Town	1	0	Cape Town	Khayelitsha; Town Two phase four informal settlement	WC - Khayelitsha
4	Eastern Cape - Senqu	0	1	Sterkspruit	Sterkspruit	EC - Sterkspruit
67	KwaZulu Natal - eThekwni	1	0	Durban	Dundee, Forbes & Manhattan Coal processing plant and Magdalena mine	KZN - Dundee
	eng - City of Tshwane	1	0	Pretoria	Pretoria West - Lotus Gardens	GP - Pretoria West
	eng - City of Johannesburg	1	0	Johannesburg	Johannesburg, Nelson Mandela bridge	GP - Johannesburg Centr
	eng - City of Johannesburg	1	0	Johannesburg	Chris Hanı Baragwanath Nursing College	GP - Rosebank
	ern Cape - Breede Valley	0	1	Cape Town	De Doorns	WC - De Doorns



What exists and
how useful is it?



“...Big data also means new challenges involving **complexity, security, and risks** to privacy, as well as a need for new technology and human skills.”

Kim, G. Trimi S. and Chung J. Big-data applications in the government sector. 2014. Communications of the ACM. Vol 57. No. 3



Is the data **reliable**?

Does this data support my **evaluation question**?

Is the **format** of the data appropriate or useable?

Can we **access** the data?

Is it **ethical** to use this data?



[://exceednutrition.com/the-shopping-trolley-conundrum/](http://exceednutrition.com/the-shopping-trolley-conundrum/)

© Data Innovator | info@thedatainnovator.com

“Big data: Not a product, but a collection of **processes**”

Source: Irina Shklovski, Technologies in Practice (TiP), IT University of Copenhagen, presentation at ILO Big Data Symposium





Dashboard/Report

Data analysis
Data mining



Data maintenance
Data Preparation
Data Integration

Data Collection
Data Cleaning
Extraction, Transfer, Load
Federation

Application programming interface

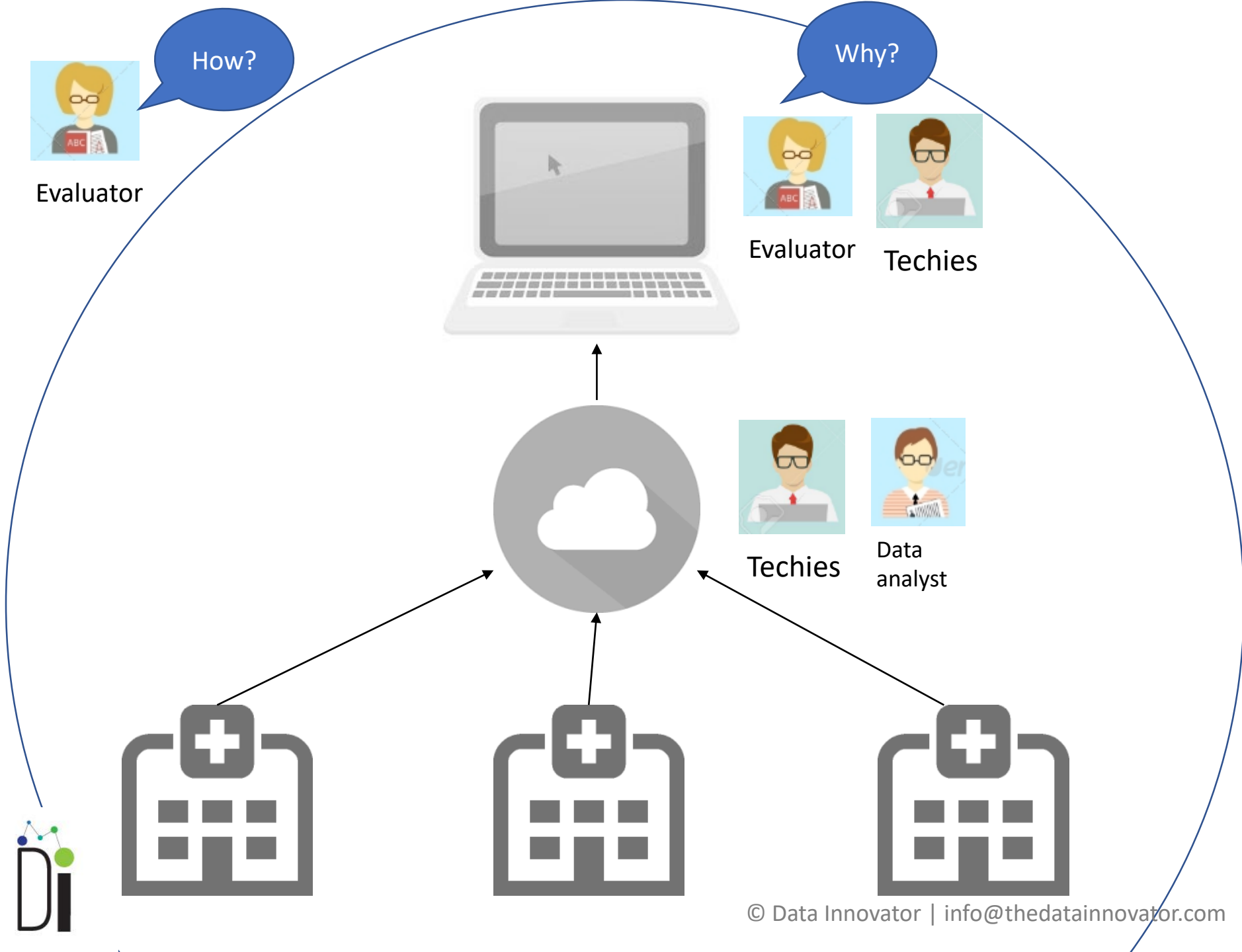


Big data



Various platforms





Big Data Analytics is useful...
the data is sometimes useful

Novel forms and
tools of analysis

Real-time data
analysis -
improved decision
making

Supplementary
data sources –
triangulating

Interactive data
visualizations –
evaluative
thinking



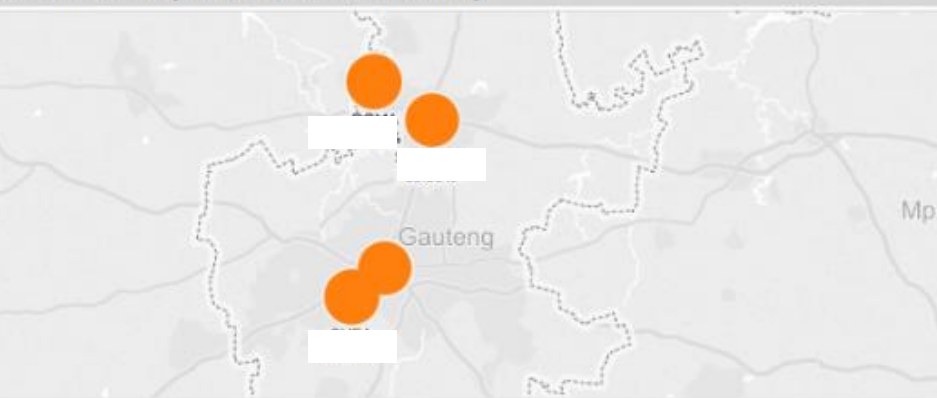
...implementing in Public Sector

Medicine Availability

Select Facility Type
National Central Hospital

Type Facility Name
All

Health Facility Medicine Availability



Indicator Summary Table

	MA1	MA2	MA3	MA4	IR1	FM1
	71.25%	28.75%	R 6 466.00	R 3 466.00	R 4 158.00	R 230 279 453.00
	71.25%	28.75%	R 6 656.00	R 3 517.00	R 4 206.00	R 233 554 522.00
	69.68%	30.32%	R 6 669.00	R 3 503.00	R 5 237.00	R 246 698 204.00
	71.89%	28.11%	R 6 666.00	R 3 415.00	R 4 447.00	R 240 373 014.00
	71.67%	28.33%	R 6 558.00	R 3 508.00	R 4 509.00	R 237 716 396.00
	71.68%	28.32%	R 6 670.00	R 3 314.00	R 4 193.00	R 240 617 351.00
	71.97%	28.03%	R 6 486.00	R 3 467.00	R 4 520.00	R 243 998 861.00
	69.71%	30.29%	R 6 577.00	R 3 478.00	R 4 749.00	R 240 473 181.00
	70.86%	29.14%	R 6 544.00	R 3 321.00	R 4 372.00	R 245 639 323.00
	73.97%	26.03%	R 6 640.00	R 3 336.00	R 4 338.00	R 241 106 345.00

Percentage Medicine Availability All



....learning from Private Sector



<http://www.smallbusinessconnect.co.za/news/wi-fi-taxi-project-launches-first-phase-gauteng.html#.WzOCXaczbiU>



<http://ewn.co.za/2014/06/12/1500-taxis-to-be-fitted-with-free-WiFi>



Big Data **exists** in multiple sources, and can be **generated**

Big Data has the **potential** to be useful in evaluation

Big Data **Analytics** is very useful in monitoring

Jerusha Govender | jerusha@thedatainnovator.com | @datainnovator